

REV. B; REDLINES; 12-9-04; INCREASED 'L' DIMENSION, ADDED SPECIAL, 10° SPECIAL 'H' DIMENSION UNDER 7".

REV. C; REDLINES; 2-7-13; REMOVED (USE STUB ACME THREAD INSERT) FROM DETAIL.

REV. D; REDLINES; 8-26-15; ADDED NOTE 3.

ES-7.3-02

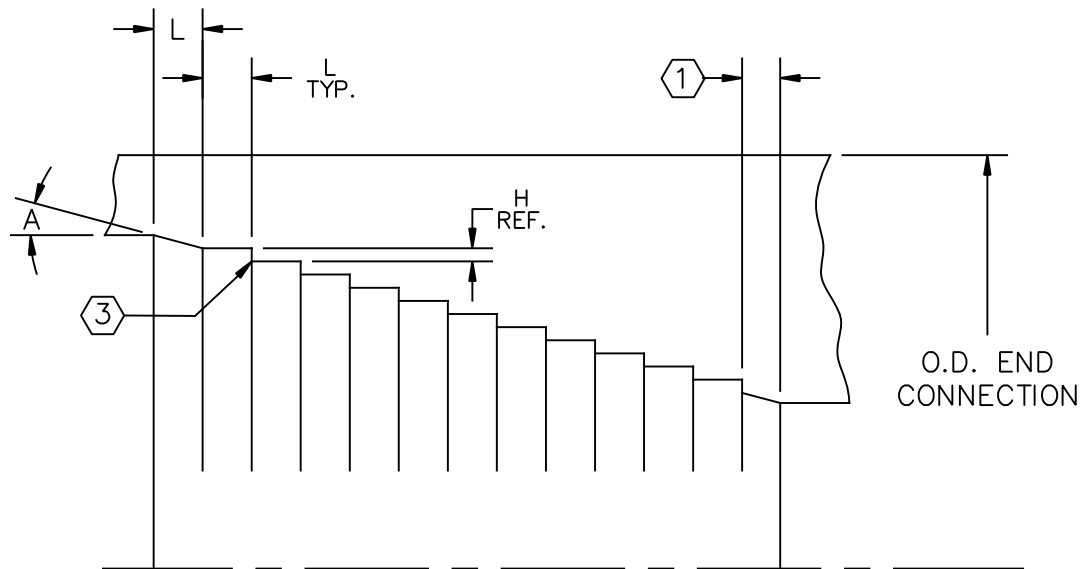
APPENDIX 1

Revision D



TAM INTERNATIONAL, INC.
INFLATABLE PACKERS

BLADDER RETAINING GROOVES STANDARD



DETAIL

O.D. OF END CONNECTION	A	L	H
UNDER 7"	15°	.020	.005
7" TO 11"		.075	.020
OVER 11"		.110	.030
7" TO 11"	30°	.050	.029
OVER 11"		.063	.030

NOTES:

- ① DO NOT FORM PARTIAL GROOVE.
- ② 'H' DIMENSIONS FOR SPECIAL 10° ANGLE.
- ③ MAINTAIN SHARP CORNERS OF THREADS.